

Aims of the Queenstown & District Historical Society

1. That we use our power to advise, concerning the saving of historical aspects of the district.
2. Preservation of and education in all aspects of historical research and interest.

Officers of the Society:

President: Brian Bayley
Past President: Malcolm Boote
Secretary: Karen Boulay - 442 8564
Treasurer: Robert Blair

Other committee members:

Mike Lynch and Karen Boulay (Courier)
John Heenan (trips)
Ray Clarkson (submissions)
Elizabeth Macdonald (submissions)
Barbara Hamilton
Colin Cassels
Verona Courmane
Jocelyn Robertson
Danny Knudson

Annual subscription: \$10 per person or family
Corporate membership: \$ 50 per annum
Life membership: \$100 per person
(*The Courier* is included in the subscription.)

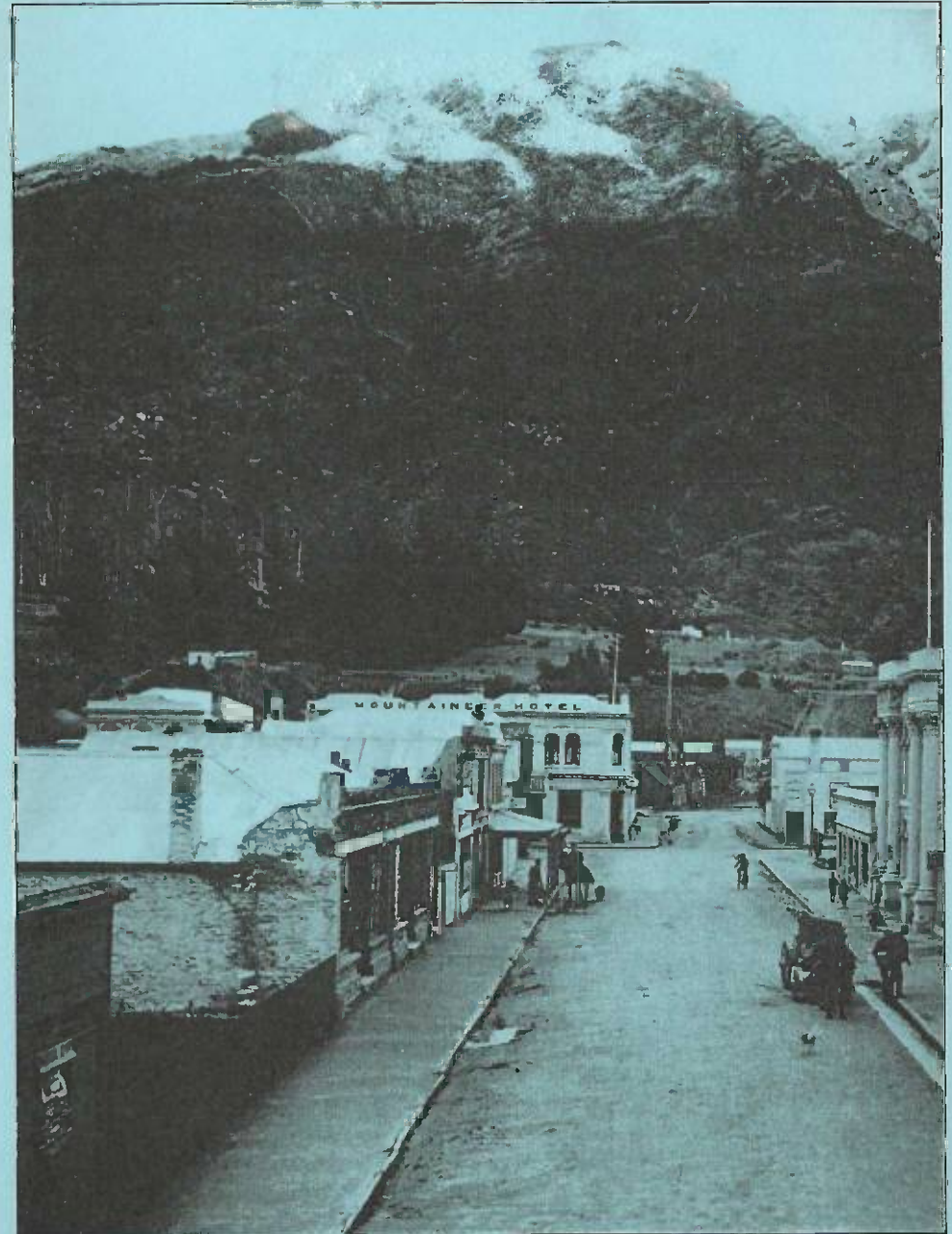
All correspondence and accounts should be addressed to
P.O Box 132, Queenstown

The Society acknowledges the assistance afforded by the
Lakes District Museum in the production of *The Courier*.

The Queenstown Courier

Winter 2006

Issue No. 76



Rees Street looking towards Cemetery Hill / Bob's Peak - late 19th Century

THE OFFICIAL PUBLICATION OF THE QUEENSTOWN & DISTRICT HISTORICAL SOCIETY

Contents:

| | |
|--------------------------------|---------|
| Committee Issues | page 3 |
| Frankton Cemetery Walk | page 5 |
| The Brunswick Flour Mill | page 6 |
| Dr. James Douglas | page 10 |
| Elizabeth Knowles | page 12 |
| Frank McBride | page 14 |
| Graham Dick Baird | page 16 |
| Helen Southberg | page 18 |
| Peter Tomanovich | page 21 |
| Turbine Memorial | page 25 |
| Powerhouse Award | page 26 |
| Snippets | page 28 |
| Otago Telephone Directory 1955 | page 29 |



Queenstown Wharf 1955

BUSYNESS AS USUAL

Predictions of downturns have been growing this year, but the Wakatipu continues to bear the brunt of development – or speculation; it is often hard to distinguish between the two. The voices for preservation of what makes this district unique, our built heritage and our landscape, sometimes seem very plaintive.

But for nearly fifty years the Historical Society has been central to efforts to save our past, and this year the workload has been no lighter.

The committee meets each month at Hulbert House in Queenstown (courtesy of Ted Sturt, who has put his money where his mouth is by covenanting the property). Meetings generally last a couple of hours, can be animated, but are always rewarding.

Submissions on resource consents with heritage implications are a constant. This year they have ranged from proposals to controversially extend (building up and out) the Mountaineer Hotel in Queenstown; a rash of development in Arrowtown's main street including the Emporium, the Stables, the Bakery; to plans for residential subdivisions in Skippers. What with preparing submissions and attending Council hearings, they can be time-consuming. Then there's the effort to protect what is already seemingly protected, such as the classic row of Buckingham St cottages.

Then there are the perennials; one of the vexed issues this year is the fate of the big and valuable specimen trees the Society planted at the entrance to the Shotover Industrial Place (using the proceeds from the timber of the giant oak felled on Frankton Road). When the new Placemakers store was built, the trees simply disappeared. No-one is taking responsibility, but we are still on the case. "Theft" is the word that keeps cropping up.

Protection for notable trees generally has been a hot topic. An irony is that no matter how potentially valuable a tree might be, it doesn't qualify for the Council list until it reaches a certain height and girth. The Society is trying to rationalise this.

But there's the rewarding too. Trips stay popular: Poolburn and the Head of the Lake so far this year, plus the very well-received Frankton Cemetery and Brunswick Mill reincarnations. In a formula used several times in past years, members depicted and told the tales of pioneers passed. Their stories take up much of this magazine. For consistency they have been changed from the first to third person. We apologise if some of the original quirkiness had to be sacrificed.

The Queenstown Heritage Walk booklet sells well, and a start has been made putting up explanatory brass plaques to mark the various sites.

Our profile stays high, but the Society needs more and younger members.
Spread the word.

In the balance in more ways than one. The Robert Lee memorial and horse trough on the Ladies Mile near Lake Hayes are to be shifted back from the road as part of the Threepwood subdivision. But there have been big arguments about how best and safest this might be done. Vigilance continues.

With help from the Society and others, the Lakes District Museum has been in the buying business. It spent \$10,000 bringing back the Rees memorial silver tea service (About which we wrote last year), and has just spent another \$4000 buying the silver Humane Society medal presented to "Maori Jack" (Jack Tewa) for his giant efforts in saving a life after a boat capsized on Lake Wakatipu in 1862. Museum Director David Clarke is keen to tease out more of the story. Where did Jack end up? Was he Tewa, or Te Whiti? So far, his trail goes cold on the West Coast. The medal was presented at the instigation of W G Rees. Interestingly, says David, Rees himself won a similar award at the age of 15 for saving a man from drowning in an English canal.

The cover picture is interesting in that it shows Queenstown's original fire station at the foot of Brecon St. The spot is now a reserve, and there are Society plans to commemorate the site. The local brass band had its room next door, and the hill leading up to Man St was known as Band Shed Hill. As late as the 1950s it was a popular sledding run in winter.

The picture also rekindles debate about the site of Bob's Peak. The Gazetted Bob's Peak is above Bob's Cove (so named because it was used as a navigation siting by Rees boatman Bob Fortune). There are some that would like the version above Queenstown returned to its long-known title of Cemetery Hill.

And from the one-up department. Did you know that the Maori name for the Remarkables range was Tupuaenuku (the same as the highest peak in the Seaward Kaikouras. Apparently it translates into the wonderfully evocative "Footsteps of the Rainbow God."

Noted during the Frankton Cemetery walk was that memorial plaques are being cemented to the protected stacked-stone walls. We've alerted QLDC Parks manager Gordon Bailey, and he says he's going to put a stop to the practice, and get some overdue remedial work done on the walls.

FRANKTON CEMETERY WALK

By Ray Clarkson

In 1865 the New Zealand Government Cemeteries Ordinance was passed and this opened the way for the Otago Provincial Council to create cemeteries within the Province. By 1868 more than 10 acres were set aside at Frankton, the Rules and Regulations for operating the new cemetery were Gazetted, and the managers appointed. This was necessary even though Queenstown had now become the main settlement because at least 21 burials had already taken place at Frankton.

Trustees replaced Managers in a new Act of 1883 and the cemetery was reduced to just over 3/4 acre with the remaining 9 acres separate. This small cemetery was enclosed by a wooden fence, the subsequently planted hedge did not grow and by 1882 the dilapidated fence was replaced on three sides by a stone dyke. In 1884 the fourth side was built plus two pillars at the gateway.

By 1977 the days of the Trustees - always prominent - Frankton settlers were over and the Lake County took responsibility. One interesting development was the Ministry of Works decision in the late 1970's to straighten the highway coming from the east. Capping stones were removed from the front corners, but it was discovered that graves of Chinamen and others were buried up against the dyke and the scheme was abandoned. In 1991 Barry Lawrence restored the fence.

The Frankton Cemetery retains the designation of Reserve No.1 in the District Plan and the walls and gates have been given lasting protection with an A Historic Classification by the Historic Places Trust. The larger Cemetery Reserve, which provided the Trustees with grazing fees for many years, passed to the Lakes District Council and was used as a rugby ground.

Based on research carried out by D.G.Jardine.

The Brunswick Flour Mill at Kawarau Falls - Rupert Iles

THE BRUNSWICK FLOUR MILL

By Rupert Iles

The flourmill at the Kawarau Falls was built by a 50/50 partnership of J W Robertson and Bendix Hallenstein in 1866.

James Robertson was born in St John, New Brunswick, Canada. Hallenstein was born in Brunswick, Germany. Hence the decision to call the enterprise the Brunswick Flour Mill.

J W Robertson and Co was a syndicate of Robertson, Dan and Frank McBride and Thos Hicks. John Patterson and James Whitmore were also members for some of the life of the syndicate. They were successful timber millers at Kinloch, ship builders – the *Antrim* being built at Kinloch – and ship owners. They built wharves at Queenstown, Frankton and Kingston. They also purchased many properties including large areas of the Frankton Flat. Robertson was the first Mayor of Queenstown, from 1869 to 1872.

The partners rightly considered the district ideal for the intensive growing of grain and, realizing the potential, decided to build a flourmill. They would then make land available and advance money to farmers to ensure a sufficient supply of wheat for the mill to process.

The land on which the mill was to be built was leased to the partnership for 21 years for a peppercorn rental. That the Government had not been able to sell this piece of land may have had some bearing on the favourable terms of the lease.

The mill (front cover of the *Courier*, no 75) was built on the water's edge on a site which today would be practically below the second gate of the Kawarau dam. There were ancillary buildings, one of which was a large stone storehouse, the walls of which are still standing and can be seen at the end of Bridge Street adjacent to the hydroelectric turbine memorial. The building and machinery cost \$6070.

Unfortunately the mill was never very profitable. In 1876 J W Robertson died and Hallenstein took the opportunity to advise selling the enterprise.

Robertson's interest was sold to Dan McBride who transferred to Thos Hicks. By 1882 the Robertson Syndicate decided to sell up its assets and Frank McBride bought one of the Frankton Flat farms - *Arranmore* - 625 acres for \$8 per acre.

The Mill had been managed by another Robertson – James - whose house was on the flat to the south of the Falls. James Robertson became the owner of the mill and operated it until his death in 1904. The mill had by then become uneconomic because of the competition from two more conveniently placed mills – the Arrow Mill owned by Peter Butel, and the Wakatipu Flour Mill on Speargrass Flat Road. In about 1906 the building was sold to Frank McBride and demolished. Buildings that were part of the flour mill can still be seen at the end of Grants Road, Frankton. See photographs the *Courier* No. 75 pages 21/22.

The turbine on a steel frame at the end of Bridge Street adjacent to the Kawarau River originally supplied electricity to the mill and later to pump water to the local hospital. It ceased to function in 1926 when the Kawarau Falls dam was built. The turbine was salvaged from the river in 1969 by N Z Electricity and erected as a memorial to the use of hydro- energy.

Ref: *Mountain Parish* – D G and J S Jardine
Golden Days of the Lakes County – F W G Miller
Lakes District Museum

Addendum as related by Mrs Jessie Jardine.

Kawarau Falls Station was owned by the Boyes Bros from 1866 to 1886. The land between Peninsular Hill and the foot of the Remarkables was essential for the welfare of the property, growing hay and turnips for feed before the sheep were mustered down from the mountains to the lower country for winter grazing.

Bendix Hallenstein, with an eye to acquiring more land for settlers to grow wheat for the Brunswick Flour Mill, had some of this land marked off into

paddocks. To this day these areas still bear the names of the settlers - Cunningham (three), Black, Henderson and Jack Hanley (Hanley Downs) who were to grow wheat there.

Mrs Betty Boyes told of the Boyes Bros trying to protect their interests, taking Hallenstein to court and bringing back W G Rees to bear witness for them. Their case must have been successful because when Dickson Jardine and family acquired Kawarau Falls Station in 1922 these areas were part of it.

Arranmore

Addendum as related by Mrs Mary Hansen, Arranmore.

Arranmore was farmed by the Hansen Family from 1938 to 1974.

It has been mentioned in the story of the Brunswick Flourmill that the building was sold to Frank McBride about 1906. Some of the buildings standing at Arranmore Farm have some connection with the mill.

The photograph on page 21 of *Courier* No 75 was of the stables with 17 usable stalls, the 18th stall having a chute in it to bring chaff from the loft. The loft floor was so polished through the dragging of sacks across it that it was used for dances. It was further enhanced because it had a bit of spring in it.

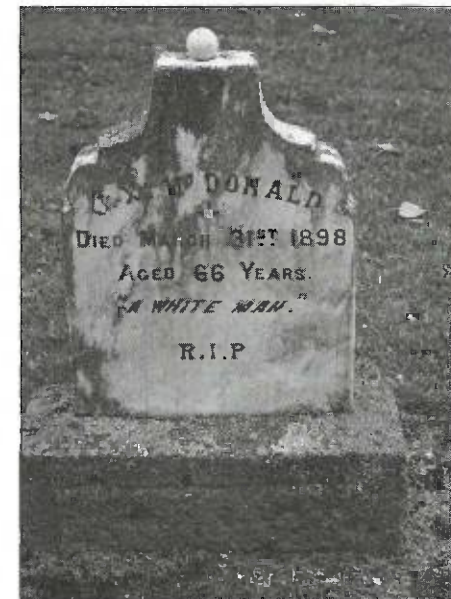
The top photograph on page 22 was the dairy. Its stacked stone walls were at some stage plastered over. The floor was flat stones with a drain in the centre.

The bottom photograph was the woolshed with a shingle roof, in part perhaps covered with corrugated iron.

The accompanying photograph shows the home of Frank McBride, which eventually fell into decay. When demolished it was found that the walls were coarse sand and gravel.



Arranmore Homestead



Frankton Cemetery

Dr James Douglas -Roly Duff

DR JAMES DOUGLAS

By Roly Duff

James Douglas was 73 in 1910. For the last 46 years he had been Superintendent of the Wakatipu Hospital in Douglas St, which was named after his family. He was born in 1837 to wealthy parents who could afford to send him to Glasgow University to follow in his father's footsteps and become a doctor of medicine. He became fully qualified in 1861 at the age of 24 and decided to venture overseas to New Zealand to practise his craft. He arrived in Port Chalmers later that year and after gaining permission to practise set forth inland, following reports that gold had been discovered at The Arrow (Foxes), where hundreds of miners would surely require the medical services he could offer.

Arriving at the Arrow in 1862, he discovered it to be entirely a town of calico tents erected along the banks of the river. But soon there were thousands of miners all eagerly searching for the elusive gold. Conditions were harsh with very hot summers and extremely cold winters, which together with the crowded and unsanitary circumstances led to frequent epidemics such as dysentery, typhoid, tuberculosis and measles. The lack of fresh vegetables and meat deprived the very hard-working miners of the necessary nourishment to sustain the good health the environment required. Because of the nature of the work, there were also many injuries, not only locally but often many miles from his base: a simple tent erected alongside those of the miners.

The Frankton Hospital was opened in 1864 in response to demand. Douglas was appointed the first (and, to this day, only) Superintendent in charge of the facility. The advantages were many. He could employ suitable nurses and staff to assist him, and with the space available able to set-up a small ward to lessen the amount of time wasted in travel. The reduced workload allowed him at last to enjoy a social life of which he had been much deprived.

He became a member of the Jockey Club, which had its course not far from the hospital. The club had just completed a new grandstand (still there). He was also involved in the Masonic Lodge of Ophir, and the Lakes

District Acclimatisation Society and was elected to the Lakes County Council and a Justice of the Peace.

He never married, but never the less had the responsibility of bringing up his brother Archibald's family of five after he and his wife sadly passed away. Two of the family became well known in the district. John Douglas was an engineer and he and others were keen to start a museum to record the area's history. Rose, his wife, was a very popular teacher, respected and loved by all those involved with young children. Hence Rose Douglas Park.



Dr James Douglas Frankton Cemetery

ELIZABETH KNOWLES

By Barbara Hamilton

Elizabeth was born on April 11, 1842, and trained as a dressmaker, working from home and helping her widowed mother on their family farm. When she was 24, she married George Knowles. He had been brought up in the hospitality trade, as his parents owned the Crown Hotel at Brechin, Scotland. After their marriage they worked for his parents and had two children, Mary Ann and James.

However, in 1871 George died of typhoid. Elizabeth stayed on at the hotel for a time then moved out to take a housekeeping job.

Elizabeth eventually decided to emigrate to New Zealand with her children. They sailed from Glasgow to Dunedin on the *Chile*, arriving on June 24, 1885, after nearly four months at sea. She took up her arranged job as housekeeper for Dr Batchelor. But he later married, leaving her jobless after two years in Dunedin.

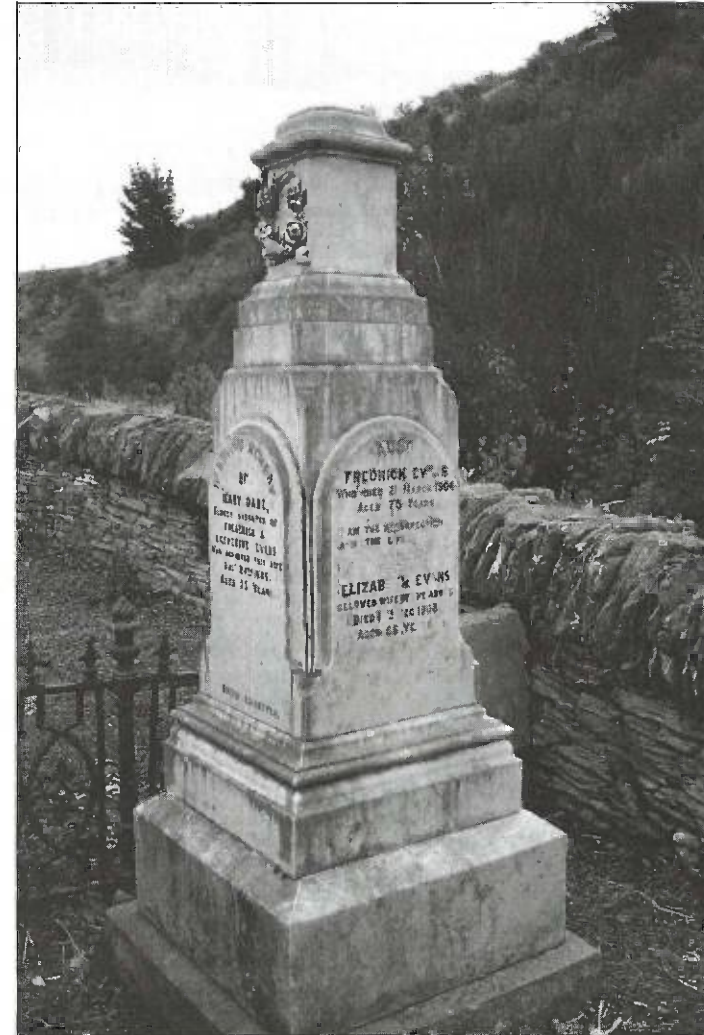
By this time her children were almost grown up, and looking forward to their own futures, so they decided to move to the goldfields. Elizabeth took up the licence of the All Nations Hotel at Cardrona and ran it for six years until it burned down in 1895. She then moved to the Reefers Arms at Maori Point, where she met and married Fred Evans in 1896.

Fred was the progressive manager of the Phoenix Gold Mine at Bullendale; he was instrumental in getting New Zealand's first hydro-electric power scheme operating for the mine. Fred and his first wife had built a house and established a farm at Cherry Farm, near Frankton. Elizabeth operated the Reefers Arms for only a short time before moving down to Cherry Farm.

They had eight years together before Fred died in 1904; he'd had a series of strokes and had not been well for a couple of years.

Elizabeth's children remained in the region. Mary Ann married John Nichol and lived in Cromwell for many years. John did company books and some goldmining. Her son James (known as Chummy Knowles), lived in Glenorchy. Together with his sons Dave and Stan, James was influential in the early days of tourism in the area. Dave operated the bus company

which took tourists to Paradise and also ran the garage. James and Stan ran two hotels in Glenorchy. Stan later ran one in Clyde. Elizabeth died in 1908.



Elizabeth Knowles Frankton Cemetery

FRANK McBRIDE

By Danny Knudson

Francis (Frank) McBride was born on May 15, 1835, at Fairhead, Ballycastle, County Antrim, Ireland. At the age of 18 he came to Australia, where he worked for a time in the bush at Ballarook, Victoria and later at Creswick, Castlemaine. After a couple of years he went back to Ireland, but returned shortly afterwards to Australia. He was joined by his brother Daniel McBride, and together they engaged in sawmilling until New Zealand's gold rush set in.

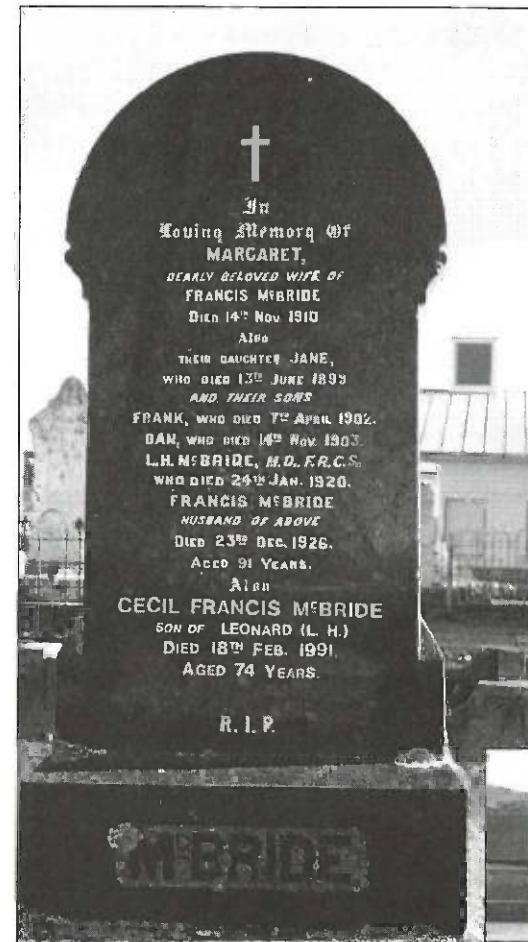
They joined the rush Gabriel's Gully, the Mecca of thousands of others. Subsequently they were present at all the most important fields -- Waitahuna, Dunstan, Fox's and the Shotover -- in succession.

They arrived at Skippers on Christmas Day, 1862, but after a short time went up to the head of Lake Wakatipu to take up sawmilling again at Kinloch. They were joined by J W Robertson, Captain Hicks, John McBride (a cousin) and J O Paterson. The partnership was carried on under the name of Robertson and Co. One of their most important undertakings was building the wooden paddle steamer *Antrim*

The alliance also established timberyards at Queenstown, and a shop -- a very large concern in its day, embracing hardware, ironmongery, groceries etc -- and along with Bendix Hallenstein the Brunswick flourmill at Frankton. The company also acquired farm property at Frankton, which Frank purchased when the firm of Robertson and Co. was dissolved in 1883.

Frank married Margaret Laverty on August 6, 1864. Their children were John James, Mary Ellen (Sis) O'Meara, Margaret Alice Sloper, Francis Frankton, Owen Laverty, Frances, Daniel Patrick, Alexandra H, Catherine Josephine (Dolly) Grant, Teresa Jane (Jane), Leonard Hugh, Cecil, and Monica Josephine (May).

He was famed for his barley-growing, so much so that he became known as the "Barley King". In later years he was a member of the Lake County Council and for a time a Queenstown Borough Councillor. For over 30 years he was on the Lower Shotover School Committee and was active in the Lake County A&P Society as well as various other organisations. Frank died of senility at the then grand age of 91. He was buried in the Frankton Cemetery on December 24, 1926.



Frank McBride Frankton Cemetery



Baird Family Frankton Cemetery

Graham Dick Baird by Brian Bayley

GRAHAM DICK BAIRD

By Brian Bayley

Born at Naseby 1874; father Thomas Baird, a "gentleman storekeeper;" mother Frances Baird, née Webb

Graham completed his secondary education at Otago Boys High School, followed by two years working for a Dunedin sharebroker. He left Dunedin about 1890 for Central Otago.

His Uncle Borthwick Robert Baird (Bob), a bachelor, was a very important influence on his life. Uncle Bob was born at Mid Calder, Edinburgh and emigrated to Bendigo, Australia before moving to New Zealand by 1862. He was appointed Receiver of Gold Revenue and Clerk of the Courts at Naseby. He had resigned from these posts by 1869 when he accepted the appointments of Clerk of the Warden's Court and Magistrate's Court, Gold Receiver and Mining Registrar at Cromwell. He lived at Cromwell for 12 years before he shifted to the Wakatipu and commenced farming. It appears he had invested in mining interests, including the Bendigo quartz mine, with considerable success.

He was said to have blamed some pigs for eating missing gold (returns for gold mined being ever a vexed issue). Irrespective of this rumour, he was able to accumulate considerable farming assets including the Soho run and Bendemeer farm at Lake Hayes. He succeeded in establishing a landmark farm, with a solid stone house set in landscaped gardens and extensive tree planting, and large stables to handle the racehorses, station hacks and draughthorses, plus all necessary farm buildings.

Uncle Bob established Graham's brother Bob in the Soho run and homestead at the Eight Mile. He established Graham at Bendemeer Farm. The two properties were worked in tandem, to their mutual advantage. Uncle Bob returned to the Old Country in 1895 to live out the remainder of his life near his birthplace. He eventually died in Cork, Ireland, while visiting friends.

Graham's life at Bendemeer was quite social. With the assistance of staff to maintain the house, grounds, stock and farm development he was free to pursue his own interests. One was the search for a suitable wife, whom he found nearby -- Bessie Patterson Douglas, the daughter of the late Archie Douglas. She was brought up in the stone house down below the Walnut Grove subdivision. Her uncle was Dr Jas Douglas, the Frankton Hospital superintendent and resident doctor for 49 years. After the death of both of her parents Bessie and her siblings lived with their uncle in the house next door to the Hospital.

Bessie and Graham were married on May 24, 1900 at St Peter's Church in Queenstown. Bessie was 21 and Graham 25. The marriage was blessed with nine children. Apart from farming, family and social affairs, Graham was quite active in the community and assumed various responsibilities including:

- Arrow riding member, Lake County Council for 12 years
- Lake County representative, Southland H and CA Board
- Chairman, Arrow Hospital Trust
- Promoter, Lake County A&P Society
- Promoter, Lake County Dairy Factory
- Acting Captain, Wakatipu Mounted Rifles
- Office-bearer, St Paul's Church, Arrowtown and People's Church
- Warden
- Member, District Efficiency Board
- Director, Shamrock Mining Co
- President, Jockey Club

Graham died of chronic nephritis on February 18, 1918, aged 44 years. Reportedly, his attempt to cure his kidney disorder by a significant intake of "wee drams" was unsuccessful.

Bessie died on October 7, 1931, aged 53 years. Their daughter Helen Baird died on January 6, 1980, and is buried at the Frankton cemetery.

HELEN SOUTHBERG

By LeBurn Iles

Helen Southberg was born in Montrose, Scotland in 1845. She was the second child of James and Mary Craigie. Her father drowned when his sailing ship was lost on a trade mission to Riga, Latvia. Later her mother died of typhus. As orphans, the children were taken care of by their maternal uncle David Anderson, who was connected with shipbuilding in Montrose.

In 1861, when Helen was 16, she worked as a cotton-spinner in a mill in Aberdeen. In 1866 she sailed alone to New Zealand. Arriving at Bluff she travelled by bullock wagon to Kingston and then by a small boat to Queenstown, then only a "calico town." There she worked in hotels. Helen met Andrew Southberg, a Swedish Officer who had jumped ship in Dunedin in 1863. He had changed his name and made his way to the goldfields. There, with two other men, he discovered a lode at Skippers Creek, later called Bullendale. It took them six months, with 32 packhorses, to bring machinery and timber to the site.

They married in Queenstown on February 7, 1867, and went back to Bullendale. It was a long hard trek – on a pack track, and many river crossings – to reach their home. Five children were born at Bullendale. It was a busy, hard life and there were many large families there in houses dotted on the hillsides. The Education Board refused to fund a school so they engaged a teacher and paid her. At times there were 25 children at school. The winters were immensely cold – cast-iron wheels were known to split with the frost.

Andrew and Helen assisted her sisters and brother to emigrate to Queens-town and they married there too.

In September, 1878 there was heavy rain followed by 12 inches of snow which quickly thawed. Creeks blocked with rocks and trees and then overflowed on to Caspers Flat. A wall of water and rocks smashed their house to pieces. They watched their stables, with the cat perched on the roof, swept away. They lost everything.

After their escape to Queenstown they were able to buy a house on the Frankton Flat. It had been the Presbyterian Manse. The Rev Ross and his wife had left in 1876, and there were stories of it being haunted. The Ross family, especially Mrs Ross, were very upset when, on a warm evening, a naked man jumped through an open window. He was a mental patient from the hospital.

Later a wood-cutter offered to live there, but he was spooked by tapping sounds and let off two rounds from his gun and decamped at full speed. The prankster was an attendant from the hospital who had married and needed a house. He had used the old trick of a metal disc and black cotton. He lived there until 1878 when Andrew and Helen bought the house.

It was a wooden house with a long verandah facing the Lake. The Frankton Flat was empty except for the hospital and a few other buildings. Andrew went backwards and forwards to his mine. Helen took care of the family and they had three more children, eventually six girls and two boys. The house was set in a big garden with fruit trees, vegetables, flowers and hens.

In 1884 their son James, aged 13, died of meningitis and is buried at Frankton.

In 1887, Andrew was ill with pneumonia and very disturbed by a business failure. He had sold a claim and the new owner found £1000 worth of gold in the tail-race which Andrew had overlooked. Helen left him briefly, with one of the girls nursing him, and he made an excuse for her to leave him. During their absence he went down to the lake and drowned.

The girls and Helen worked on. The garden and the Church were Helen's great passions. They ran a tea-house at their home. People would come from Queenstown by launch and scramble up the path from the lake for Devonshire teas.

Helen lived to see Ingram, her son, and two daughters marry. One daughter, Matilda died in 1909 from TB. Nearby she watched the building

of the road and bridge over the Kawarau and to the east the racecourse. The flourmill at the Falls, built in 1866, waxed and waned.

Her life was mostly hard work, child rearing, gardening and tea house duties. During the summer months they sometimes had paying guests. One young man in his memoirs remembered Helen as a kindly, leathery-faced woman with swollen hands and wearing dresses made of fabric like butchers' aprons and dressing in black, with lace, spangles and jet beads on Sundays.

Her daughters tried to make her take life more quietly in her final years, but she was stubborn and used to hard work. After a brief illness she died on July 17, 1930.

The Southberg's house was moved a short distance in 1981 to 19 Robertson Street, Frankton.

References: *Indirections* Charles Brash; *Mountain Parish* J D and J S Jardine; *Golden Days in Lake County* F W G Miller; Aspinall Family, Skippers; Lakes District Museum



Peter Tomanovich by Malcolm Boote

PETER TOMANOVICH

By Malcolm Boote

Peter (whose birth name was Pietro) was born in 1835 on the Adriatic Coast of Croatia, in the old Austrian Empire. While it is commonly written he is buried in the Arrowtown cemetery, he was in fact buried in plot 265 in the Frankton cemetery, on November 22, 1920. There is no headstone.

He went to sea at an early age, training as a naval cadet, and later captained and part-owned a sloop trading on the Adriatic. He moved via England to Australia in 1868, spending a year in the Victorian goldfields before leaving for the West Coast of New Zealand. Peter moved to Gibbston in 1869 where he stayed the rest of his life.

He spent years alluvial mining on the other side of the Kawarau at Bakery Creek and other sites on the river. Although nominally he did not have great success with the gold, one site near Deep Creek became known as Peter's Flat and it was rumoured he kept 200 ounces of gold hidden under a dead cow over the river. For years Peter and Hugh Harvey crossed the river every day on a primitive Flying Fox. They worked the river as far as the Nevis Bluff, but the banks were not sufficiently stable to run water for sluicing, so mining was limited.

Living on an acre above the river, Peter built a small house of puddled mud, and planted a large orchard, kept bees and was the local pig butcher. He became well known for the fruit he produced – figs, mulberries, apples, pears, peaches, cherries, almonds and walnuts. Many of the fruit trees he planted in Gibbston remain to this day, particularly at Perriam's orchard on the back road. His special skills in grafting resulted in three varieties of apricots on some of those trees.

The bees became a business and eventually there were about 80 hives. The bees pollinated the fruit trees. He sold honey and also produced a powerful mead, popular with locals. If suspicious people visited his home he would tip over one of the hives – an old Croatian remedy for dealing with raiders; the angry bees would see them off. There is a story that locals tell that he strained the dark brown honey through the legs of his Long Johns. "I never

used my underpants in this way, every year buying fresh muslin for this purpose," he was reported to have retorted.

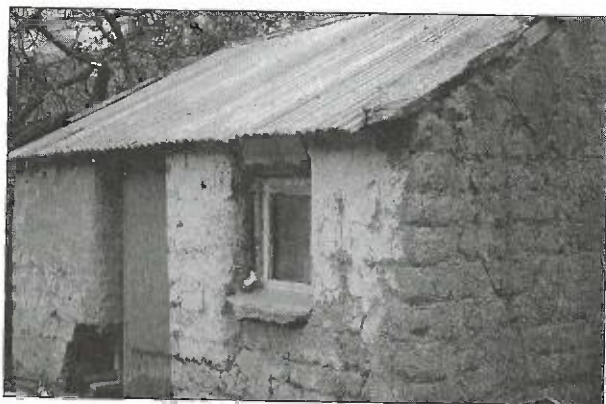
He did have some problems with the Queenstown Stock Inspector, who claimed that his hives were below standard and should have Patent, or boxes with movable frames, to prevent killing the bees when honey was collected. He told them he had managed the old way for years, and was a quiet and law abiding citizen who was respected in the community. He was left alone in his later years.

Peter smoked a large 12-inch long pipe for years and was eventually taken to the hospital in Frankton with acute bronchitis. Everyone thought he was a "poor old feller" but he proved them wrong and they were surprised when 70 gold Sovereigns were found in an old tobacco tin in the cottage.

His neighbour, Gerald Enright, actually did hang a "ghost of Peter" in the cottage facing the window and it is said to have scared off quite a few nosy visitors. His mining partner, Hughie Harvey, looked after the place and Peter was said to have gone on to haunt the cottage.

The little house still stands on the plateau above the river surrounded by magnificent fruit trees, its sturdy walls are full of memories.

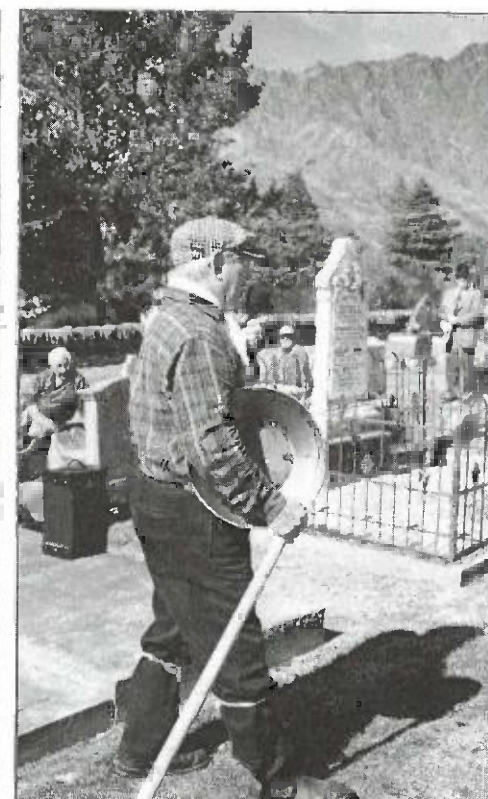
Reference: *Gibbston Story* and the *Lake County Press* 1920

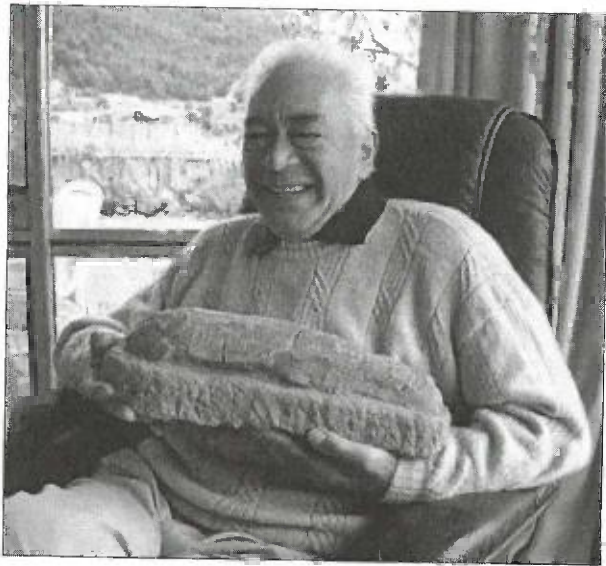


Tomanovich Cottage Gibbston

Trip to Frankton Cemetery

OUTING TO THE FRANKTON CEMETERY





*Rex Austin and fellow members at his home earlier this year.
Rex was presented with Queenstown & District Historical
Society life membership*



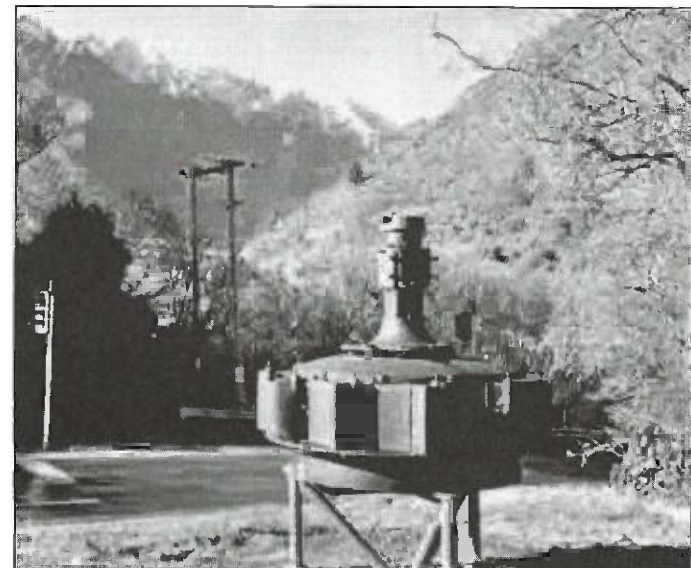
Plaque on turbine in Bridge Street

PLAQUE ON THE TURBINE MEMORIAL AT THE END OF BRIDGE STREET, FRANKTON

The turbine of American manufacture (Stout, Mills and Temple, Dayton, Ohio) is an early version of the "Francis" type used at Roxburgh and most other hydro-electric power stations. It was first used in the 1870s to drive a flour-mill situated nearby and later to pump water to the local hospital.

The turbine ceased to function in 1926 when the adjacent control gate structure across the river, known as the Kawarau Falls Dam, was completed by a private mining company to assist in winning gold from the river. This scheme failed and ownership of the control gate structure passed to the New Zealand Electricity Department in 1956 as part of the Roxburgh hydro-electric scheme to give limited control (not now exercised) over the out flow from Lake Wakatipu.

In August 1969 this turbine was salvaged from the river by NZED, Dunedin and erected on this site as an object of historic engineering interest and as a memorial to the use of hydro-energy, which has contributed so much to New Zealand's development.

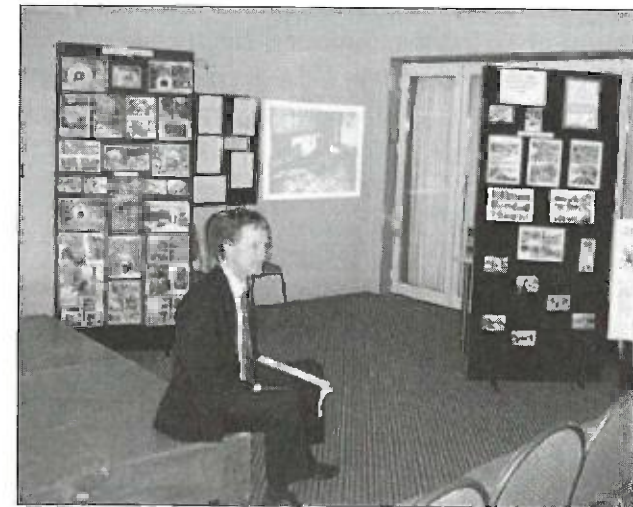
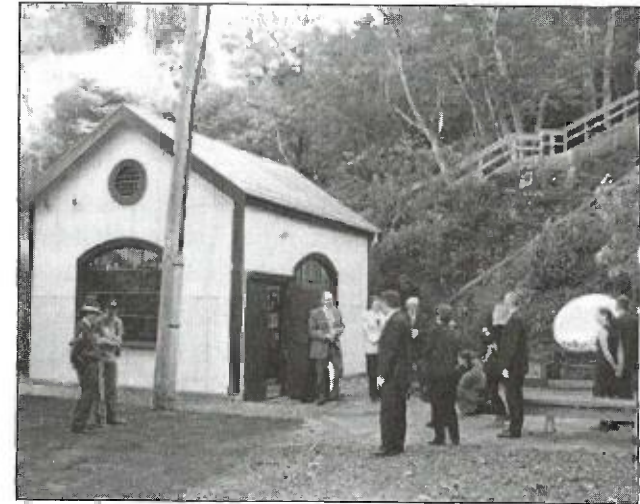


Powerhouse Award

The Society can take great pride that three out of the four prize-winners at the recent David Cox awards had Historical Society members at the helm. Malcolm Boote, Karen Boulay, Mike Lynch and Revel Buckham as trustees of the winning One Mile Powerhouse restoration; Eric Lee, leader of the Rotary team who restored the Shotover Bridge, and Phil Jones, who was in command of the Oamaru Police Station restoration and refurbishment. Congratulations to the award winners, and keep up the good work. Thanks from all our members.



Helen Clarke's visit to Powerhouse April 13 2006



Alan Blee at the HIPT David Cox Award April 13 2006

SNIPPETS

Work has commenced on the building of the new archives department at the Lakes District Museum.

Overheard at tea after the Frankton cemetery walk - Scotland born Alistair Somerville, a true highlander, (alias Thomas Baird), was heard to complement Danny Knudson (alias Hugh McBride) "that was a fine Irish accent you found today." The reply came, "and that wasn't a bad Scottish accent you managed to produce."

The Society has been instrumental in arranging a new bronze dial for the vandalised sundial in Rose Douglas Park, Arrowtown. It was built in what was then the school garden by George Beale, a member of a Macetown mining family. He lived in Anglesea Street and built two garden ornaments and a headstone in Arrowtown cemetery. The sundial commemorates the Jubilee of King George V, 1910 to 1935. It now sits on a new site, proudly in the sun once more, alongside the heritage roses recently planted at the new stone gateway.

Help from pupils of Arrowtown school on the design and layout of the dial itself was greatly appreciated. Their involvement provided a lasting link with the area as it was the Arrowtown school garden at the time the memorial was built and many former pupils spent happy hours cutting grass and maintaining the garden.

Pages from the 1955 Otago Telephone Directory

courtesy The Hocken Library

QUEENSTOWN

ATTENDANCE CONTINUOUS

EMERGENCY NUMBERS

| | |
|---|---------------|
| FIRE—Ring Exchange Operator | — |
| POLICE | 36 |
| HOSPITAL | 35 |
| REPORTING BROKEN POWER OR ELECTRIC-LIGHT LINES | 113-K |
| Faults Service—For reporting telephone faults | 27 |
| Telephoning Telegrams | Ring Exchange |
| Registered Medical Practitioner—Doper Dr M F | 168 |
| Public & Licensed Hospitals Registered Nurses &—District Health Nurse | 116 |
| HOSPITAL Frankton | 35 |
| Maternity Hospital Sydney St | 103 |
| Adams Noelene Mrs | 173-M |
| Adrian Beauty Salon | 170-M |
| Agriculture Dept—L C N Wilder Livestock Inspector | 61 |
| Allan C J Milk-vendor Riverside Frankton | 73-A |
| Allan J V Cloverdale Lower Shotover | 23-X |
| Anderson A B Mrs | 103 |
| Anderson W A Dr | 18 |
| Armour J Norman | 132 |
| Automobile Association Otago—A B Burt Rep | 145-M |
| Baddock Douglas | 75-M |
| Bagrie J A Lower Shotover | 49-W |
| Balkie C L | 56-M |
| Bank of New Zealand—J Y Hamay Rgr | 25 |
| Bank Post Office Savings | 27 |
| Barker C E Ben Leonard Station | 49-D |
| Barnett John | 141-M |
| Betlin R A Mrs | 141-S |
| Bech House—Miss M O'Connell | 40 |
| Begos A C Miss | 43-S |
| Beil J Gordon Dentist | 180-K |
| Bendall V A | 12-M |
| Bennetts R J | 137 |
| Blanch V A Rev The Vicarage | 30 |
| Bleakley G H | 106 |
| Borough Council—see Council Borough | 57-M |
| Bowling Club Government Gardens | 68 |
| Bond D M | 78-K |
| BOYD HECTOR PLUMBER Ballarat St | 122-K |
| BOYD J McW BUILDER & PLASTERER | 12-K |
| Boys W H | 169-M |
| Bradley M C Miss | 141-K |
| Brown Ian W Istay R D 1 | 29-U |
| Brown J S Lower Shotover | 73-W |
| Brown W H & M L Fruiterer & Confectioner | 43-M |
| Brown William A | 98-W |
| Buckham H C Cordial Manufacturer | 65 |
| Buddle & Greer Misses | 28-M |
| Burns A Mrs Melbourne St | 112-M |
| Buxton A L Miss Hallenstein St | 128-D |
| Cameron A M | 130-S |
| Cameron L Miss | 148-S |
| Campbells Fruiterers & Confectioners Ballarat St | 45 |
| Rainy J Y | 71 |
| Camping Ground | 16-S |
| Caretakers residence | 16-M |

DUNEDIN—11

QUEENSTOWN—continued

| | |
|--|-------|
| Catholic Presbytery | 53 |
| Cincham T Frankton | 133-R |
| Cilliwell A L Mrs | 90 |
| Clouston Jas | 60-K |
| Cochrane G D Melbourne St | 165 |
| Cochrane G D Beach St | 10-S |
| Cockburn D H Harehuru Wharehuanui | 145-D |
| Cockburn G R Arthurs Point | 49-M |
| Cockburn J C Frankton Rd | 145-D |
| Convent—Dominicans | 127 |
| Cook Peter G | 120-S |
| Cook Richard C | 97-M |
| Coronet Restaurant & Milk Bar Ballarat St | 123 |
| Collins W & R V Coronet Peak | 74-H |
| Council Borough | 57-M |
| Council Lake County—G H Bleakley Clerk | 4 |
| E J Hamer Engineer | 111 |
| Courthouse | 5 |
| Croickshank R Frankton Rd | 145-S |
| Durie S F Mrs Lake St | 21-S |
| Dagg H McF | 172 |
| Davidson Brog Butchers Rees St | 15 |
| Davidson R A | 159 |
| Davidson Thos Brunswick St | 96 |
| Davies E Miss | 114-M |
| Davies H Whakatipu Transport Ltd | 41 |
| Davies W P | 124 |
| Dawson W P | 73-K |
| Dental Clinic | 100-S |
| District Health Nurse | 116 |
| Donaldson T J | 151-S |
| Duncan F Frankton | 103 |
| Dyer M A Mrs | 148-K |
| Edgar John | 147 |
| Edwards W Frankton Rd | 67-M |
| Eliot J B | 112-S |
| Eliot W M | 91-S |
| Elliott Wilson | 146-R |
| Embassy Theatre | 10-M |
| Entor C P R | 164-M |
| Finlayson A P | 42-D |
| FIRE BRIGADE STATION | 33 |
| Fitzpatrick F Arthurs Point | 49-R |
| Fosters Guest House | 173-D |
| Francis G W Mrs Beilham St | 22-S |
| FRANKTON HOSPITAL | 35 |
| Fraser E F Mrs | 98-R |
| George E A H | 84 |
| Gibb C E | 56-K |
| Gillison T F | 62-S |
| Gilmour J D | 98-S |
| Gilmour Les Ferry Hotel Lower Shotover Ring Toll | — |
| Golden Terrace Tourist House—Jas McDonald Propr | 10-S |
| Govt Tourist Intuity Office | 11 |
| Grant Donald Mrs Tutuho | 143 |
| Grant J D Frankton | 29-K |
| Grant John Grandview | 73-U |
| Grant R C | 92-K |
| Grant R N | 92-S |
| Grant W A Mrs Rossford House | 72-S |
| Gray D F Deerholme | 150-M |
| Green F A Sawmill Gorge Rd | 12-S |
| Green G M Reqd Plumber One Mile Rd | 101 |
| Greenslade A A Miss Lake St | 24-M |
| Greenslade D W Wharehuanui | 131 |
| Griffiths R J Stalloner & Fancy Goods | 74-X |
| Griffiths R J | 181 |
| Haggitt Lily Mrs | 130-M |
| Hales E M Mrs | 150-S |
| HAMILTON HOUSE—W & F Davidson | 84 |
| Hamilton J B Gorge Rd | 79-M |
| Hanrahan T L | 123 |
| Hansen A L Frankton | 42-J |

QUEENSTOWN—continued

| | |
|--|-------|
| Hansen C | 171-R |
| Hansen Chas | 82-M |
| Hansen E M | 171-D |
| Hansen Peter Frankton | 29-D |
| Haworth F M | 169-K |
| Hensman H O Camping Grounds | 153-M |
| Hood Geo Mrs | 163 |
| Hood R Peninsular St | 130-R |
| Hopwood E R | 121-S |
| HOSPITAL Frankton | 170-S |
| Hotel Eichardt | 35 |
| Houston I | 69 |
| Houston T M Lower Shotover | 29-M |
| Hunter Jean R Miss | 151-D |
| Inder M E Mrs Frankton Rd | 121-M |
| Inder R A | 153-S |
| Inglis E K Hay St | 80-M |
| Inglis John Shotover St | 89-S |
| Internal Affairs Department | 128 |
| Jamie J S Mrs Lakeview | 62-M |
| Jardine D G Remarkables Station | 73 |
| Jardine D G Remarkables Station | 73-H |
| Jardine Grievie T | 73-R |
| Jardine G T The Homestead Kawarau Falls | 23 |
| Jarvis M M Mrs York St | 108 |
| Johnson C C Lower Shotover | 73-J |
| Jones George J Stanley St | 72-D |
| Junction Hotel Arthurs Point Ring Toll | — |
| Kawarau Rabbit Board Beach St | 10-S |
| Inspector H H Buchanan | 115 |
| Keen J JP Builder Melbourne St | 107 |
| Kershaw M C | 54-S |
| Kilgus J R C | 132-M |
| Kitto R L | 140-M |
| Knights J C | 91-K |
| Knowles J D Photographer & Photographic Dist | 178 |
| Knowles J D | 92-M |
| Lake County Council—see Council Lake County | 4 |
| "Lake Wakatipu Mall" Beach St | 10-S |
| Lake Wakatipu Rabbit Board Beach St | 10-S |
| Lakeside Butchery The Ballarat St | 14 |
| Laurel Bank Tourist Flats—M & W Mulholland | 166 |
| Leary Kate Miss | 88 |
| Lewis Les Mrs Stanley St | 110-M |
| Lindsay J L Slog Conr & Funeral Director | 76-M |
| Lindsay J L Shotover St | 76-S |
| Little J S Hobart St | 119 |
| Little T A Arthurs Point | 49-K |
| Lomond Cottage—Misses Deans & Everist Propns | 138 |
| Lucas Fredk J | 133-S |
| Luckie T R Melbourne St | 87 |
| Lynch L G Grocer | 20-M |
| Lynch L G | 20-S |
| McBride S A | 102 |
| McBrides Hotel—W Cooper Propr | 9 |
| McDonald A M Veterinary Surgeon | 128-K |
| Macdonald W H En Dah Wyne | 42-M |
| McDonald W Mrs | 104 |
| McHaffie C O Z White V A Misses | 135-M |
| MacIntyre C L | 98-M |
| MacKay A | 140-S |
| MacLaren W | 97-D |
| McLellan A H | 128-S |
| McLean W A Dalefield | 49-A |
| McMaster A | 28-K |
| McMillan D R H | 139-M |
| McMillan G F Hotel Arthurs Point Ring Toll | — |
| Mennell J J One Mile Rd | 8-S |
| Macnicol A | 29-Z |
| Macnicol A | 162 |
| Magistrate's Court | 5 |
| Majestic Beauty Salon—Mrs M M Scott Blrht | 149 |
| Manse—Rev W S Brettell | 24 |
| Marr John Melbourne St | 108 |
| Maternity Hospital Sydney St | 108 |
| Watson R | 93-K |
| May F K Wharehuanui | 74-Z |

QUEENSTOWN—continued

| | |
|--|-------|
| Miller J W Melbourne St | 44 |
| Milligan E C | 171-H |
| Mills J R cr Hobart St & Frankton Rd | 67-S |
| Milne W L Mrs Mann St | 146-M |
| Ministry of Works Highways Surfaceman | 171-S |
| Moody A S Dr | 88 |
| Mount Cook & Southern Lakes Tourist Co Ltd— | |
| Office | 66-M |
| Manager res | 66-S |
| Taxi Service Day | 66-M |
| Mountain View Lodge & Camping Grounds | 153-M |
| Mountaineer Hotel—Mr & Mrs A L Brun Proprs | 7 |
| Muir J H | 17-S |
| Munro A | 158 |
| Murchison Catherine Mrs Stanley St | 85 |
| Murdoch J R | 156 |
| Murphy G A | 144 |
| Nelson G R | 167 |
| Norris I L | 134 |
| Oldham A F Wharehuanui | 74-U |
| OTAGO CENTRAL ELECTRIC-POWER BOARD | |
| Office & Showroom | 113-K |
| Local Officer—W S Rankin res | 113-S |
| Power Station | 113-M |
| Power Station Wye Creek—C Roland res | 73-K |
| Electrician | 113-D |
| Palmyra House—Misses Luckie | 31 |
| Paulin W | 50-M |
| Perks G M Draper | 83 |
| Perks G M Mrs | 148-M |
| POLICE STATION | 36 |
| POST & TELEGRAPH DEPT— | |
| Line Foreman | 48 |
| Line Foreman res | 47 |
| Mail-room | 86 |
| Postmaster | 27 |
| Postmaster residence | 51 |
| Queenstown Borough Council | 57-M |
| Queenstown Footwear Supplies Ltd—R A Ker | 122-S |
| Queenstown Service Centre Ltd | 145-M |
| Queenstown Stores Ltd General Mch's Bllrt St | 8-M |
| Queenstown Timber & Joinery Co Ltd | 99 |
| Railways & Lake Steamer Service | 6-M |
| Railways Goods Parcels & Luggage | 6-S |
| Rainbow Dawn Miss | 129-M |
| Ramsay J P | 100-M |
| Red Diamond Taxi—J A Taylor Propr CmpSt | 118-M |
| Reid J G Glenpanel | 73-S |
| Reid Mary G Mrs Wilmot Av Frankton | 171-J |
| Reidy J | 136 |
| Remarkable Values Ltd | 160-M |
| Robertson M T Town Clerk | 57-S |
| Robins R Baker Rees St | 55 |
| Robins W E Sydney St | 126-M |
| Robinson S M Mrs | 81-M |
| Rose-Mary Drapers The—Mrs G M Perks | |
| Proprs | 148-S |
| Royal Cafe—B Campbell Proprs | 120-M |
| Russell V T | 173-K |
| Ryan A R Mrs Melbourne St | 78 |
| Ryan N | 79-S |

QUEENSTOWN—continued

| | |
|---|-------|
| Smith T J | 133-U |
| Soper M F Dr | 168 |
| Southberg M H | 171-W |
| Southern Scenic Airtrips Ltd— | |
| Aerodrome | 133-M |
| Manager F J Lucas | 133-S |
| Booking Office | 133-K |
| Spence J W Frankton Rd | 75-S |
| Stevenson A Mrs Hobart St | 12-D |
| Stevenson J K | 98-D |
| Stewart C A | 173-S |
| Stewart D Stock & Station Agent | 54-M |
| Summers S S Shotover St | 26 |
| Sutherland D F Jun Gorge Rd | 77 |
| Taylor J A Taxi-proprietor | 118-S |
| Taylor J J Mann St | 151-M |
| Templeton I S | 17-K |
| Thomas M A Mrs | 114-S |
| Thomas R J Dublin St | 50-S |
| Thompson Frank W Strawberry Gardens | 42-S |
| Thompson Jas E | 171-M |
| Thompson J N Frankton | 170-K |
| Thompson John Jun Mann St | 56-S |
| Thompson R C | 22-R |
| Thompson T E | 171-K |
| Thomson J C Miss Kaweka | 64 |
| Thomson R Mrs | 152 |
| Tipler E J Mrs | 171-Z |
| Tomkies H Stanley St | 63-M |
| Tomkies Raymond | 63-S |
| Topliss C B | 133-D |
| Tripp A A Fruiterer & Grocer | 42-K |
| Vercoe B A Hallenstein St | 117 |
| Wakatipu Courts Ltd | 105 |
| WAKATIPU MOTORS— | |
| Garage & Service Station Shotover St | 32 |
| After Hours—W Davies | 124 |
| Wakatipu Stores | 19 |
| Wakatipu Taxis | 93-M |
| Wakatipu Trading Co | 81-R |
| Wales N Y A | 70 |
| Walker A J | 169-S |
| Walsh J P | 142 |
| Wardell G H Cone Peaks | 73-M |
| Warren W D Mann St | 60-S |
| Watherston J | 135-D |
| Watson R Burns Mrs Brunswick St | 34 |
| Watt A D | 93-S |
| Wesney E M Mrs Beetham St | 22-M |
| Weir S J Stanley St | 175 |
| Wheatley A H Draper Ballarat St | 58-M |
| Wheatley A H Mens Outfitter | 58-S |
| Wheatley A H Hay St | 60-M |
| White Star Hotel—T D Griffiths Propr | 155 |
| Office & Guests | 3 |
| Wilkinson's Pharmacy Queenstown Ltd Ballarat St | 13 |
| D O Haig Manager res | 126-S |
| Williams M E Mrs | 146-K |
| Woodbury R F | 72-K |
| Wright L M Gorge Rd | 129-D |
| Wye Creek Power-station | 73-K |
| Young H S Hallenstein St | 135-S |

May 1955

ARROWTOWN

HOURS OF ATTENDANCE

| | |
|--------------------|------------------|
| Week-days | 6 am to midnight |
| Sundays & Holidays | 8 am to 8 pm |

EMERGENCY NUMBERS

| | |
|---|-----------------|
| FIRE—Ring Exchange Operator | — |
| POLICE | 8 |
| REPORTING BROKEN POWER OR ELECTRIC-LIGHT LINES | Ring Postmaster |
| Faults Service—For reporting telephone faults | 46 |
| Telephoning Telegrams | Ring Exchange |
| Registered Medical Practitioner—Ferguson Dr W B O | 20 |

| | |
|---|------|
| Anderson C B | 33-R |
| Anderson J | 33-S |
| Anderson P M Gibbston R D 1 Queenstown | 7-K |
| Anderson W J J Fairview | 22-R |
| Arrowtown Stores Ltd | 3 |
| Atlantic Union Oil Co Ltd—Shaws Motors Ltd Agents | 5 |

| | |
|--|------|
| Baker C M Mrs—R D 1 Cromwell | 25-D |
| Baker Ernest William—R D 1 Cromwell | 30-W |
| Beaton J G Gibbston R D 1 Queenstown | 7-W |
| Bennett S E | 37-S |
| Bowler G A Arrow Junction R D 1 Onstwn | 30-U |
| Bowler G B Lakeview R D 1 Queenstown | 12-M |
| Bunn E G Craigroy R D 1 Queenstown | 25-R |
| Butel J Willowbank | 16-M |

| | |
|--|------|
| Central Hotel—G J Phillips Propr | 2 |
| Chalmers D R Sunnyview | 37-M |
| Chalmers George Kinross R D 1 Queenstown | 25-J |
| Chard F W Gibbston R D 1 Queenstown | 25-X |
| Collingwood Robert Ayrburn R D 1 Onstwn | 6 |
| Cooke A D | 4-D |
| Council Borough | 18-M |
| Cowan S E P Gibbston R D 1 Queenstown | 7-X |
| Cowie James | 33-M |

| | |
|--|------|
| Dagg T D Mt Soho | 36-M |
| Davies D W Lake Hayes | 10-X |
| Dennison I M Mrs | 33-D |
| Dennison James W Lake Hayes RD1 Cromwell | 26-M |
| Douglas J G Cave Farm R D 1 Queenstown | 13-R |
| Douglas J H Denbigh St | 35-M |

| | |
|--|------|
| Elliot G—R D 1 Queenstown | 16-R |
| Ewing W L A Glencoe Station | 11 |
| Feehly C J Spruce Grove R D 1 Queenstown | 9 |
| Ferguson J G Mrs | 15 |
| Ferguson W B O Dr | 20 |
| FIRE STATION | 18-D |

| | |
|---|------|
| Gilbert G R | 37-K |
| Gordon C R Thurby Domain | 13-K |
| Grant H Mrs Lake Hayes R D 1 Queenstown | 26-K |
| Grant H N Lower Shotover R D 1 Onstwn | 13-S |

| | |
|--|------|
| Haggitt K A L Bendemeer R D 1 Cromwell | 10-S |
| Hamilton A E Mrs Carnarvon St | 36-K |
| Hamilton J B Doonholm R D 1 Queenstown | 30-R |
| Hamilton J M Mrs | 29 |
| Hansen A R Mrs | 24-M |
| Hansen J M Delnabo R D 1 Queenstown | 28 |
| Henderson C A Storekeeper | 32 |
| Henderson Donald | 16-K |
| Henderson Gordon J Butcher | 14 |
| Henderson Gordon J | 35-K |
| Hill Fred Mill Farm | 4-M |
| Holden R J Schoolhouse | 24-K |

ARROWTOWN—continued

| | |
|---|------|
| Jackways A J | 35-S |
| Jenkins John | 12-S |
| Jones R Lake Hayes R D 1 Queenstown | 10-R |
| Kennedy J A Cone Peaks R D 1 Queenstown | 30-X |
| King F E | 37-R |

| | |
|---|------|
| Lake Wakatipu Rabbit Board—R J Jenkins Insp | 23-S |
| Little W J Crown Tce | 22-S |
| Little W J | 24-S |

| | |
|---|------|
| McBride A H Lower Shotover R D 1 Qnstown | 10-W |
| McCrone E E Mrs | 13-J |
| McEntyre A T Shanagolden R D 1 Qnstown | 16-A |
| McEntyre J F Pleasant View R D 1 Qnstown | 26-S |
| Mackie D R Royalhmn | 22-J |
| Mann B Gibbston R D 1 Queenstown | 25-W |
| Martin W H Confectioner | 34 |
| Miller A H Gibbston R D 1 Queenstown | 7-J |
| Miller J Gibbston R D 1 Queenstown | 7-M |
| Ministry of Works—Head Raceman A C Eridge | 27 |
| Raceman—R H Redhead | 13-W |
| Mitchell R A | 38-K |
| Modern Bridges Ltd Cookshop Victoria Bridge | 25-S |

| | |
|---|------|
| Nelson A Mrs Arrow Bridge R D 1 Qnstown | 30-S |
| Nelson E C Hillhead | 22-U |

| | |
|---|------|
| Partridge F A Brookside R D 1 Queenstown | 16-D |
| Paterson G D Strathalfan R D 1 Queenstown | 13-M |
| Patton J A Wiltshire St | 23-M |
| Perriam M E Mrs Gibbston R D 1 Queenstown | 7-D |
| POLICE STATION | 8 |
| POST & TELEGRAPH DEPT— | |
| Counter | 45 |
| Postmaster | 46 |
| Residence | 19 |

| | |
|--|------|
| Read W D | 38-M |
| Reed J W | 12-K |
| Reid A L Willowbrook R D 1 Queenstown | 16-S |
| Reid Alex Lochmill R D 1 Queenstown | 13-D |
| Reid D J Gibbston R D 1 Queenstown | 25-A |
| Reld John Roldhaven | 17 |
| Ritchie A M | 18-S |
| Ritchie R Springfield Crown Tce | 22-X |
| Robins A S Lake Hayes R D 1 Queenstown | 10-K |
| Ross Hugh Balmgown R D 1 Cromwell | 10-J |
| Royal Oak Hotel—M E Holland Licensee | 1 |

| | |
|--|------|
| Sanders J R Carnarvon St | 35-H |
| Scott C R Mt Rosa R D 1 Queenstown | 7-U |
| Scott J & Sons Gibbston | 7-R |
| Scott R R Gibbston R D 1 Queenstown | 7-S |
| Seddon A G | 25-K |
| Shaw A T Mrs Arrow Bridge R D 1 Qnstown | 30-A |
| Shaw James JP | 21-N |
| Shaw R Arrow Junction R D 1 Queenstown | 30-M |
| Shaw W J JP | 21-S |
| Shaws Motors Ltd Garage & Transport Agents Atlantic Union Oil Co Ltd | 5 |

| | |
|---|------|
| After Hours— | |
| Transport Manager—A J Shaw | 21-N |
| Garage Manager—W J Shaw | 21-S |
| Sim J A Whitechapel | 25-M |
| Sligo W F Anglesea St | 36-S |
| Stevenson J W Lake Hayes R D 1 Cromwell | 26-R |
| Strain E N Threepwood R D 1 Queenstown | 10-M |
| Summers G | 26-D |
| Swann C W Arrow Junction R D 1 Cromwell | 30-J |

| | |
|-------------------------------|------|
| Taxi—W H Martin | 34 |
| Taylor D Crown Tce | 22-M |
| Thomas H E | 38-S |
| Thwaites L G—R D 1 Queenstown | 12-R |

| | |
|---|------|
| Waldron S M Arrow June R D 1 Queenstown | 30-K |
| Walson W M—R D 1 Queenstown | 13-A |
| Whitau J Tearooms | 31 |
| Wilcox J | 37-D |
| Young J A Lake Hayes R D 1 Cromwell | 10-D |